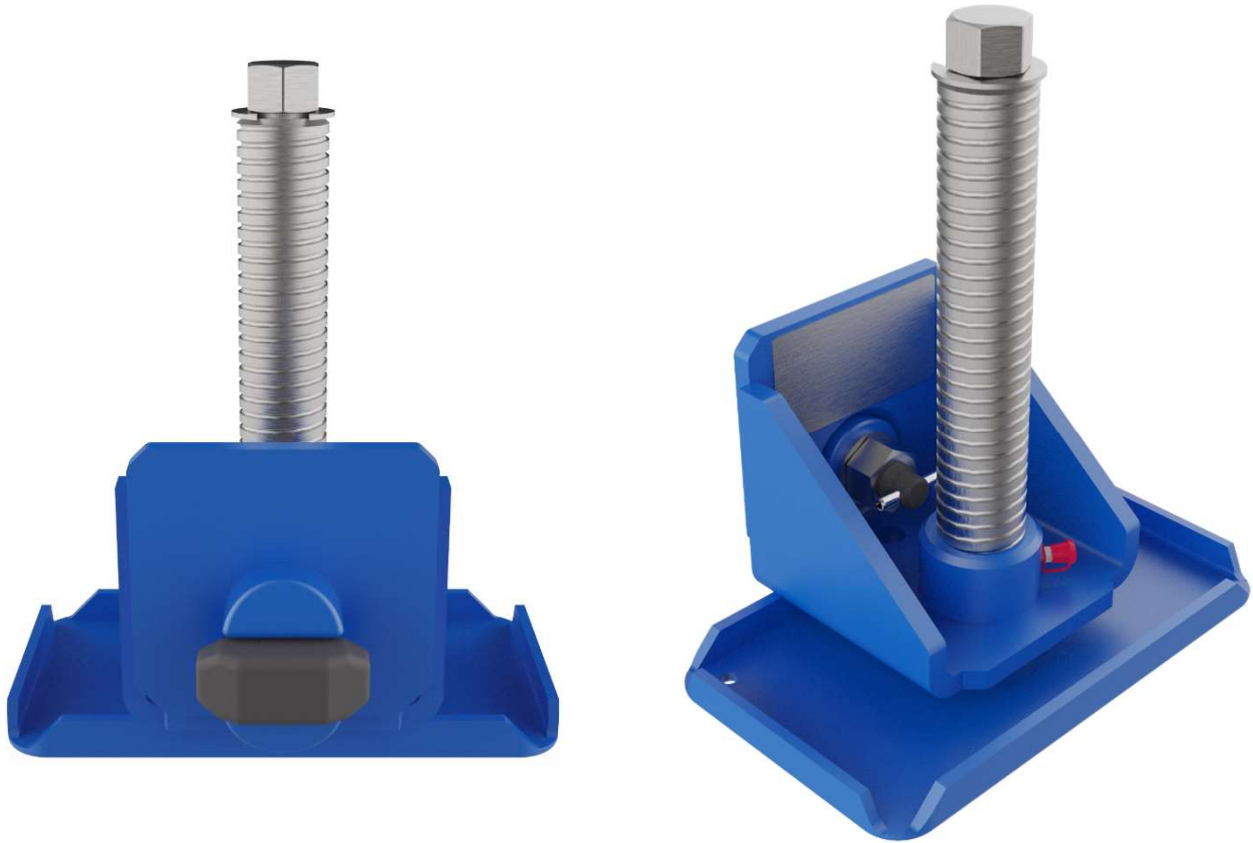


238

Levelling support

for containers with ISO corners, up to max. 10 t total weight



The series provides simple, solid spindle supports with manual drive for leveling containers or structures near ground with ISO corners interface.

- Simple installation on the ISO corners.
- Manual drive based on trapezoidal thread spindle.
- Open spindle.
- Direct spindle drive via a key or hand ratchet.
- Foot plate permanently attached.

NATO-Stock-Number: 3950-12-390-2480

Model	238-T01	238-T02	238-T03
Maximum load capacity in the system	9.000 kg	2.000 kg	10.000 kg
Maximum load capacity per support	4.500 kg	1.000 kg	5.000 kg
Lifting height	200 mm	400 mm	200 mm
Allowed ground inclination	4,0°	2,0°	2,0°
Wind load	20 m/s (72 km/h)	20 m/s (72 km/h)	20 m/s (72 km/h)
Operating temperature range	-32°C - +49°C	-32°C - +49°C	-32°C - +49°C