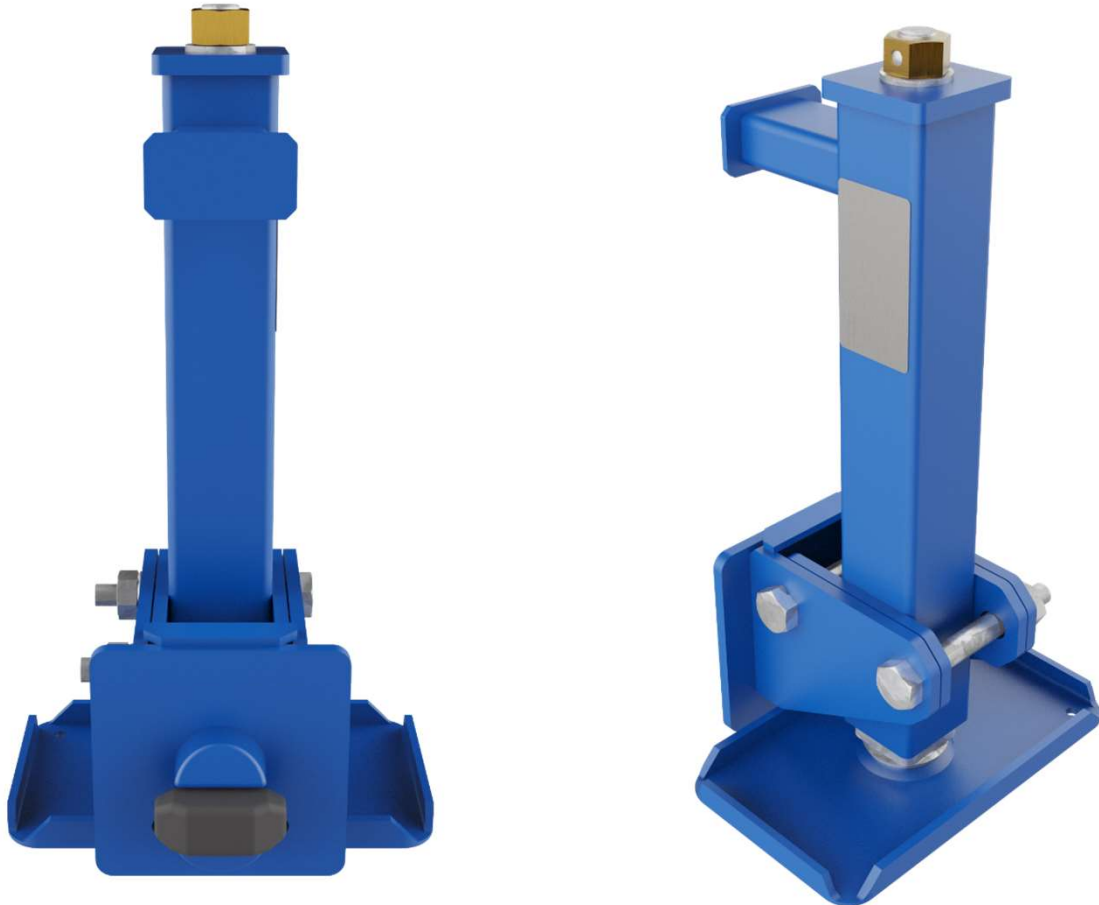


245

Levelling support

for containers with ISO corners, up to max. 11 t total weight



Levelling supports for levelling or stabilizing a container or container-like module.
The upper outrigger leans against the contact surface of the container (smooth sheet or angle).

- Simple installation on the ISO corners.
- Manual drive based on trapezoidal thread spindle.
- Direct spindle drive via a key or hand ratchet.
- Foot plate permanently attached.
- Optional prop adapter for lateral stiffening.

245

Levelling support

for containers with ISO corners, up to max. 11 t total weight

Model	245-T01	245-T02	245-T03
Maximum load capacity in the system	11.000 kg	8.000 kg	6.000 kg
Maximum load capacity per support	5.500 kg	4.000 kg	3.000 kg
Lifting height	200 mm	300 mm	400 mm
Overall height	460 mm	575 mm	680 mm
Weight per support	22 kg	16 kg	17 kg
Allowed ground inclination	3,0°	3,0°	3,0°
Wind load	20 m/s (72 km/h)	20 m/s (72 km/h)	20 m/s (72 km/h)
Operating temperature range	-32°C - +49°C	-32°C - +49°C	-32°C - +49°C

