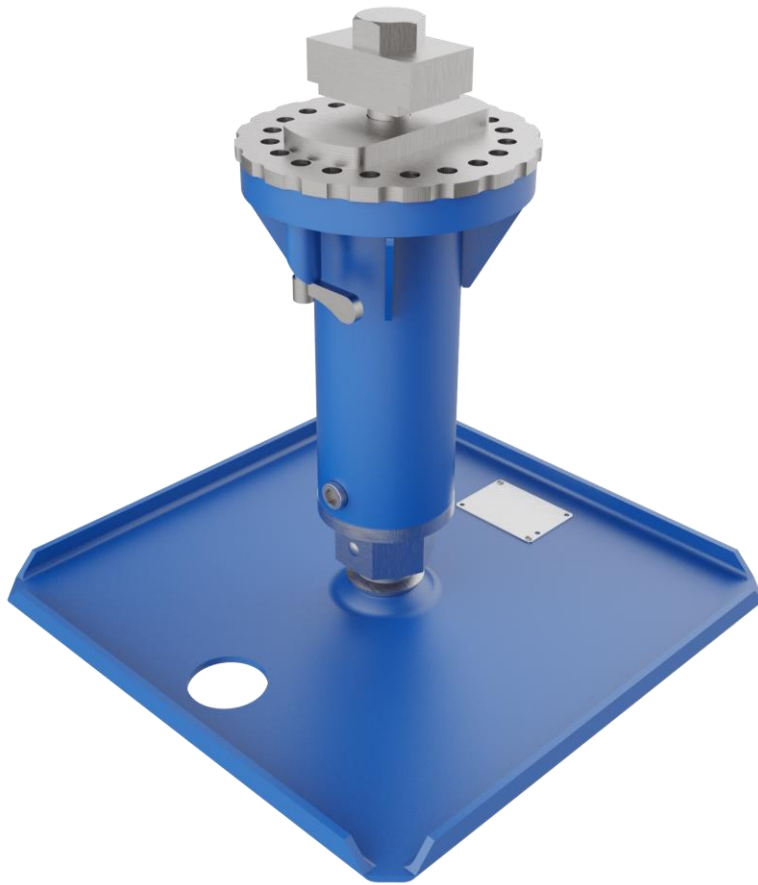


289

Levelling support

Sub frame levelling support 4.0 tons, 150 mm lifting height



The manually driven supports type 289 are locked from underneath into the ISO corners and used for leveling.

- Manual drive based on trapezoidal thread spindle.
- Direct drive by spanner or hand ratchet.
- Foot plate permanently attached.
- Also for shield shaped ISO-corner hole available (for vertically erected containers) - 289-T02

Model	289-T01 289-T02
Maximum load capacity in the system	up to 8.000 kg
Maximum load capacity per support	up to 4.000 kg
Lifting height	150 mm
Overall height	ca. 315 mm
Weight per support	ca. 20 kg
Allowed ground inclination	2,0°
Wind load	20 m/s (72 km/h)
Operating temperature range	-32°C - +49°C